

FieldMaxTM

SPORTS LIGHTING

FIELDMAXTM SPORTS/ HO FLOOD LIGHT



MaxLite[®]

A NEW WAVE OF LIGHT



FieldMAX™ SPORTS/HO Flood Light



Applications

- Sports and recreation (Class of Play III or IV, per IES RP-6-15)
- High mast
- Transportation terminals & airports
- Agriculture

Features

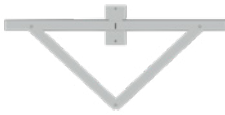
- Three output packages - 515W (up to 77K lumens), 620W (up to 100K lumens) and 1200W (up to 172K lumens)
- Up to 5 optical options: narrow - wide
- Universal Voltage (120-277V) and High Voltage (220-480V) Options
- 6kV + 10kA minimum surge protection, 20kA option
- Slipfitter or yoke (suitable for Cross-Arms) mounting choices both ANSI 3G
- Integral controls options - on/off photocell, dimming, remote location control, and dynamic theatrical effects
- Accessories - field installable visor and laser pointer (for aiming)

ORDER STRUCTURE

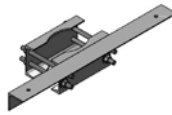
FAMILY	OUTPUT	VOLTAGE	-	CCT	BEAM SPREAD	FINISH	MOUNTING	INTEGRAL CONTROLS	WIRELESS CONTROLS	SURGE
SHF = Sports/ HO Flood	515 = 515W 620 = 620W 1200 = 1200W	U = 120-277V H = 220-480V	-	40 = 4000K 50 = 5000K	N = Narrow MN = Medium Narrow M = Medium MW = Medium Wide W = Wide <i>See Beam Spread Chart for details</i>	L = Black	K = Knuckle Slipfitter Y = Yoke (Cross arm hardware supplied by others)	Blank (Blank) RPC = 3pin Twist Lock Receptacle PR7 = 7pin Twist Lock Receptacle <i>Twist Lock Control sold separately</i>	Blank (Blank) SN = Wireless Controls AV = Wireless Controls <i>Contact Maxlite for which Wireless Control applies and about Dynamic Lighting Effects</i>	Blank = Standard (10kA = 120-277V, 20kA = 220-480V) SP = 20KA Surge 120-277V <i>All drivers include additional 6kV</i>

10-year standard warranty coverage for material, 5-year coverage on labor (\$25/per fixture).
Further details available at www.maxlite.com/warranties

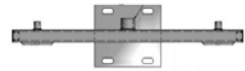
Mounting Accessories



Angle Mount Crossarms



Collar Mount Crossarms



Side Mount Crossarms

Accessories



Black Visors in Large, Medium and Small



Laser Pointer

Controls

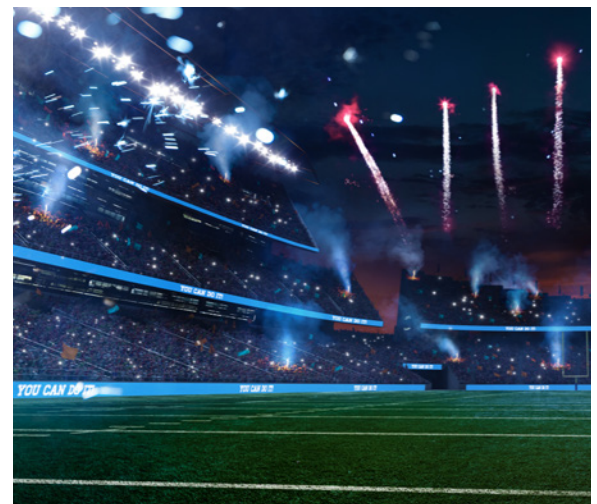
Twist Lock Control Accessories



Wifi Gateway

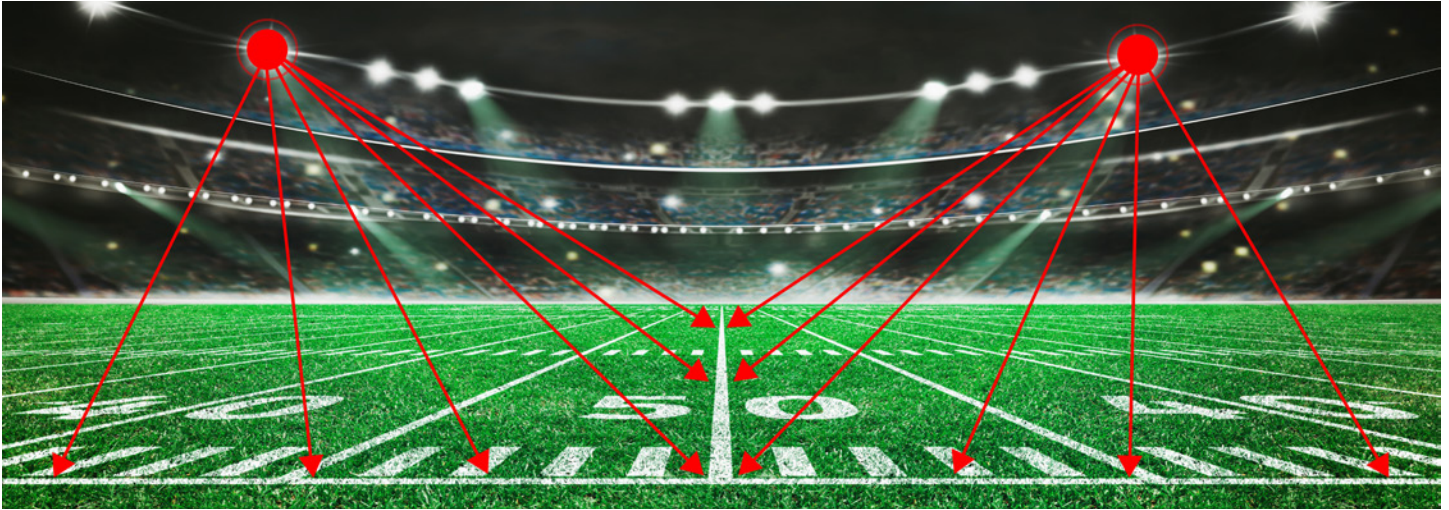


- Twist lock controls and photocell
- Network lighting controls - grouping, scheduling, 0-10V dimming and remote location control
- Dynamic lighting - theatrical lighting effects option available



Other Services

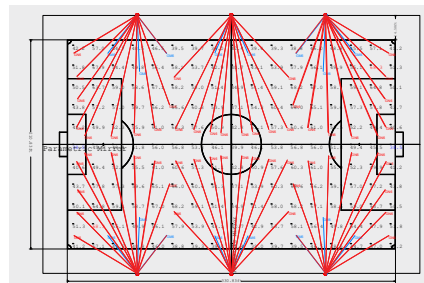
- Submittal package
- Lighting layout and aiming diagrams
- Energy consumption analysis



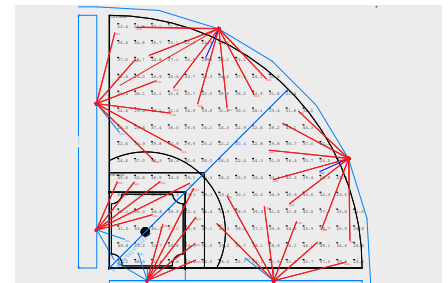
Lighting Layout Examples

Typical Layouts

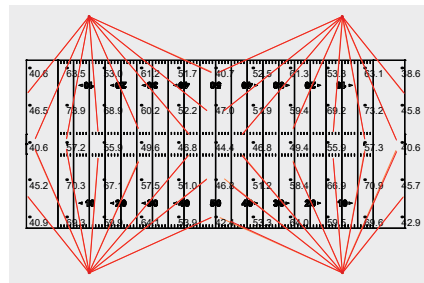
Application	Class	Fc Avg 3' Above Horizontal	Max/Min Ratio
Baseball Infield	I - Pro	150	1.3:1.0
Baseball Outfield	I - Pro	100	1.7:1.0
Baseball Infield	II - College	100	1.5:1.0
Baseball Outfield	II - College	75	2.0:1.0
Baseball Infield	III - HS	50	2.0:1.0
Baseball Outfield	III - HS	30	2.5:1.0
Baseball Infield	IV - Rec	30	2.5:1.0
Baseball Outfield	IV - Rec	20	3.0:1.0
Football	I - Pro	100	1.7:1.0
Football	II - College	50	2.0:1.0
Football	III - HS	30	2.5:1.0
Football	IV - Rec	20	3.0:1.0
Soccer	I - Pro	75	1.7:1.0
Soccer	II - College	50	2.0:1.0
Soccer	III - HS	30	2.5:1.0
Soccer	IV - Rec	20	3.0:1.0
Tennis	I - Pro	150	1.5:1.0
Tennis	II - College	75	1.7:1.0
Tennis	III - HS	50	2.0:1.0
Tennis	IV - Rec	30	2.5:1.0



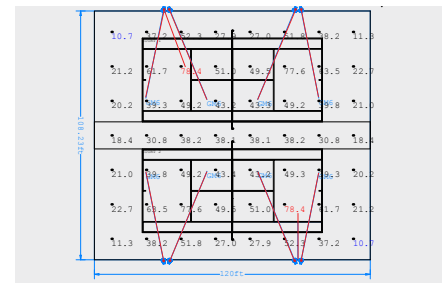
Soccer Field



Baseball Field



Football Field



Tennis Court

*For reference only. Contact your sales rep or email applications@maxlite.com for layouts.